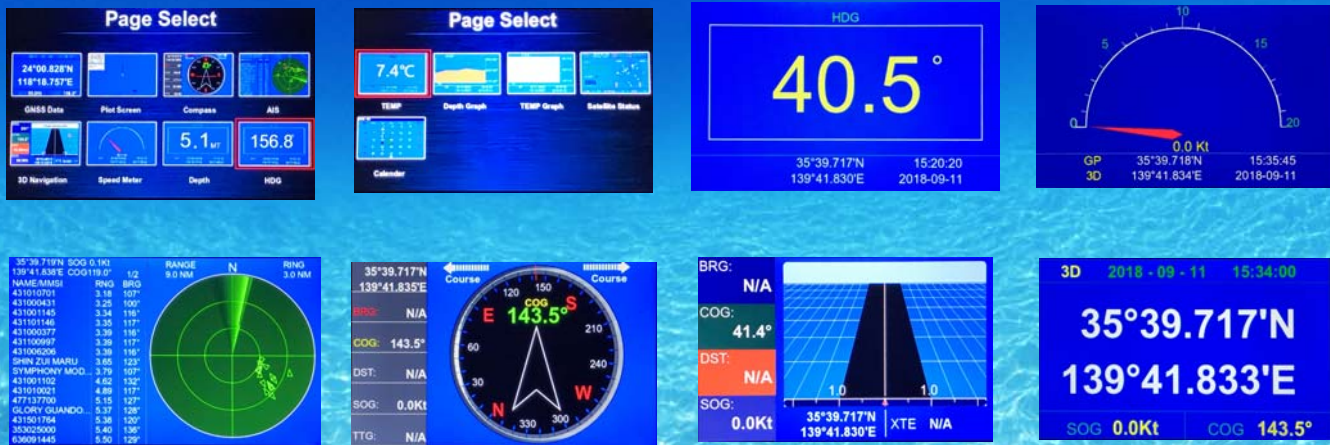




Model RD-400



Typical Display MODE



Featuring:

- Daylight viewing 5" Wide high-resolution WVGA (800x480 dots) TFT color LCD
- 13 Multi-functional Remote Display mode are available depend on NMEA0183 input
- Digital depth readout connected with Navigational Echo Sounder using DPT sentence
- Graphic depth line display function and depth alarm setting available
- Heading digital display and Graphic Compass display using HDT, HDG, COG
- Digital Temperature display and historical temperature graph using MTW sentence
- AIS Target display with range ring circle or plotter screen with own ship's position
- Speed display graphic screen using RMC, VTG sentence
- 3D-highway screen for navigation by stored Waypoint data
- Latitude and Longitude digital display using Built-in GPS receiver or external GGA, RMC input
- Multi-functional Alarm settings (Depth, AIS, GNSS no-FIX, WPT, etc.)
- External GNSS or AIS fix data can be displayed synchronously
- Accurate Time & Date display using built-in GNSS receiver when antenna connecting
- Lunar Calendar built-in to help fishing schedule
- Waypoint, Route and Track data list display and data edit function
- Store user Waypoint data to SD/SDHC card
- Simulation mode for Route plan
- Remote Display for JMC model F-1000, F-2000, F-3000W, GPC-400, GPE-100, AIT-202A

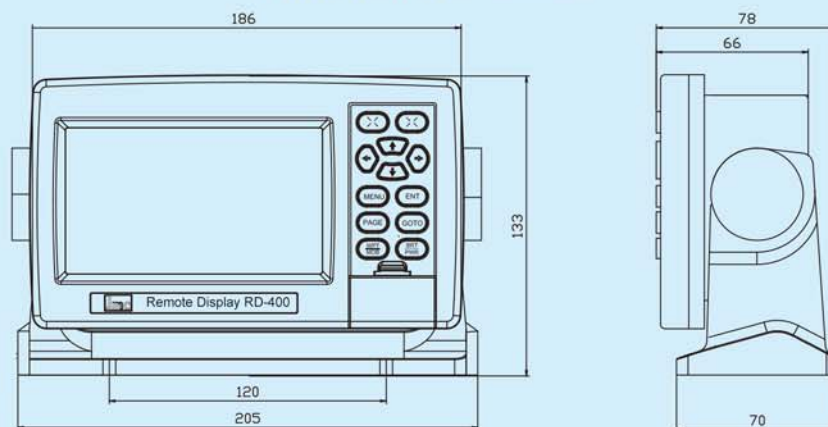
Model RD-400

Specifications:

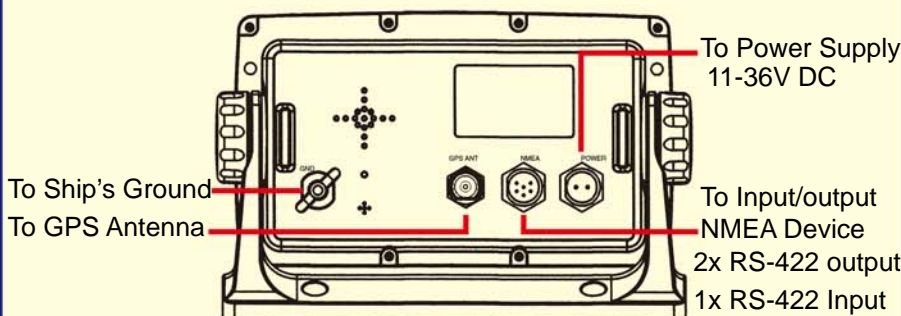
Display Screen:	5 inch color TFT LCD, WVGA (800x480 dots)
Built-in GPS Receiver:	12 tracking / 24 acquisition-channels GPS/GLONASS/WAAS/EGNOS/MSAS/GAGAN, QZSS ready
Plotter Scale:	0.05 – 100 n.m.
Waypoints:	Total 10,000 points and 1 MOB point
Route Waypoints:	200 routes x 48 points for each route
Track-line:	Total 20,000 points
Audible & Visual Alarms:	Arrival, Anchor, Cross-Track error, GNSS no-Fix, SBAS, HDOP, AIS, Depth, Speed
Interfaces:	RS-422 /NMEA0183 Input port x1, output port x2
Input Sentence:	DPT, HDT, HDG, MTW, RMC, GGA, VTG, ZDA, VDM, VDO
Output sentence:	GGA, RMC, GLL, GSA, GSV, VTG, XTE, APB, BOD, RMB, WPL, BWC, ZDA
Data Link speed:	4,800, 9,600, 19,200, 38,400 baud
Power Requirements:	11 to 36 VDC, 4W (MAX. 6W)
Cabinet size & Weight:	205(H) x 132 (H) x 80(D) mm /approx. 600 g
Environment Requirements:	Operation temperature -15~+55°C / +40 °C 93 % relative humidity Storage temperature -20~+70°C

NOTE: Specifications are subject to change without notice or obligation.

Dimensions (in mm)



System Configuration



Standard Equipment

(1 pc. each, except as specified)

1. Main Unit
2. Mounting Bracket
3. Know with Plastic gasket x2 Pcs.
4. Power Cable 2m
5. Data cable with 6 pins plug 1.2m
6. Wood Screws x4 pcs
7. User's Manual
8. GPS antenna 8 m