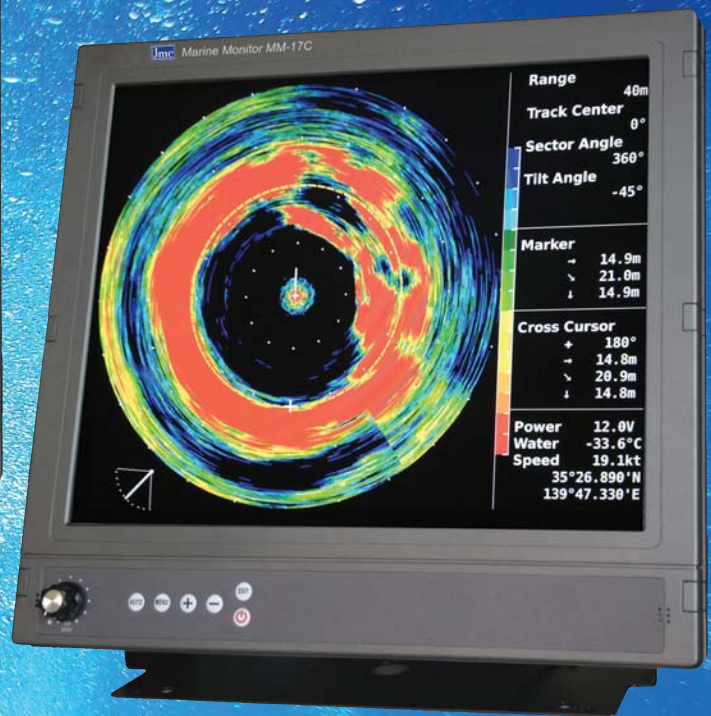




Model MM-17C



MM-17C Used as Track Plotter's Monitor



MM-17C Used as Sonar's Monitor

Featuring:

17-inch daylight-viewing TFT LCD with white LED backlighting for eco-friendly low power consumption and extremely long service life while maintaining high definition, high contrast graphic image

Supports all popular graphic resolution specifications (VGA, SVGA, XGA and SXGA), automatically or manually via menu.

Designed specifically for continuous-duty use under touch marine environment

Ready for direct connection to black-box type or software-defined type navigation equipment, such as track plotters, echo sounders and sonar systems fitted with standard Dsub interface

Automatic synchronization and selection of appropriate screen resolution based on input signal specifications

Automatic positioning of graphic image, with manual override if required

Continuously adjustable backlighting level, providing optimum screen brightness for all ambient lighting conditions - day/night

Supports major menu languages, e.g. English, French, German, Italian, Russian and Spanish. Accepts a wide range of voltage input voltage from 12 to 36 VDC for safe and reliable operation from poorly regulated ship's power source.

SPECIFICATIONS

- Display Screen: 17-inch (337X270 mm) TFT LCD, compliant with IEC 62288
- Backlighting Source: White LEDs
- Backlighting Level: Continuously adjustable
- Display Color: Up to 16,700,000 colors
- Graphic Resolution: VGA (640X480), SVGA (800X600), XGA (1024X768), SXGA (1280X1024), automatic synchronization
- Image Positioning: Automatic or manual adjustment (via menu)
- White Luminance: 550 cd/m² maximum
- Contrast Ratio: 1000:1
- Viewing Angle: 170°/horizontal, 160°/vertical
- Hardware Interface: 15-pin Dsub connector
- Power Requirements:
 - Input Voltage: 12 to 36 VDC, floating ground, reverse polarity-protected
 - Current Drain: Approx. 2A/12 VDC, 1A/24 VDC (with max. brightness level)
- Environmental Conditions:
 - Operating: -15 to 55° C, 95% RH, without condensation
 - Storage: -20 to 60° C
 - Waterproofing: IPX 4 (protected equipment category/IEC 60945)
- Weight: Approx. 5.1 kg/Cabinet, 1.2 kg/Mounting Bracket

NOTE: Specifications are subject to change without notice or obligation.

