



Model F-3000W



0098

- ★Dual frequency navigation sounder
- ★Type-approved by DNV AS
- ★Compliance with MED certified with wheel mark for EU flag vessels

Featuring:

IMO resolution-compliant dual-frequency navigation sounder housed in electrostatically-shielded ABS plastic cabinet

Certified to comply with EU Marine Equipment Directive (MED) and other applicable international standards for wheel mark certification

7-analog color, easy-on-the-eye echogram across 10.4" long-life CFL-backlit daylight-readable LCD screen

Fully automatic operation, tracking bottom contour with appropriate range, transmit power, receiver gain and TVG settings. Manual override is possible.

Store up to 24 hours of sounding history for off-line applications, together with date, time stamping and with position coordinates (optional GPS sensor with NMEA data outputs required).

Eexternally acknowledgeable navigational and failure alarms by IEC-defined software commands

Password-protected to prevent unauthorized changes to important system parameter settings

Built-in AC and DC power supplies, accepting a wide range of AC or DC voltages for safe operation, eliminating the need for an AC power adapter or a DC voltage regulator

Specifications:

Transducer Frequencies: 50 and 200kHz (single housing); separate single frequency transducers optionally available.

Screen: 10.4" CFL-backlit LCD, daylight-viewing, VGA (640X480 pixel) resolution

Depth Ranges: 5 to 1000m in 8-range steps, automatic/manual selection; fathom/braccia/foot calibrations selectable

Minimum Detectable Depth: Better than 50cm (200 kHz), 1m (50 kHz)

Transmit Power: Approx. 1 kW RMS with automatic selection of optimum power level and pulse length for range in use

Soundings Data Storage: Up to 24 hours in non-volatile memory; retrievable from PC/INS device via RS-422 port

Digital Interfaces: 1 X RS-422 port, 1 X RS-232C port, 1 X 8-pin I/O DATA port (NMEA-0183/RS-232C level), 1 X Centronics

Power Requirements: 11 to 40VDC, approx. 18W or 110-220 VAC, approx. 30 VA

Cabinet Weight: Approx. 6.6 kg (with mounting bracket)

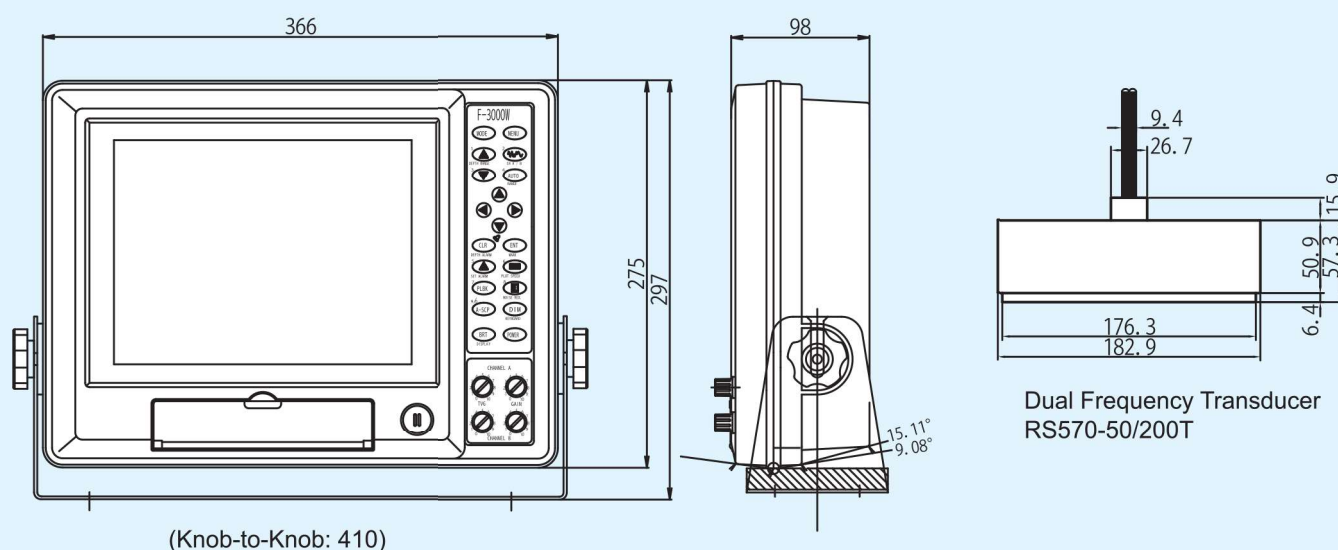
Environment: Compliant with IEC 60945-2002 (protected category), IPX4

Compass Safe Distances: 2.4m (standard) with bracket attached

Major Compliant Standards: IEC 60945(2002), IEC 61162-1(2016), -2(1998), IEC 62288(2021) IEC 62923-1, -2(2018), ISO 9875(2000)

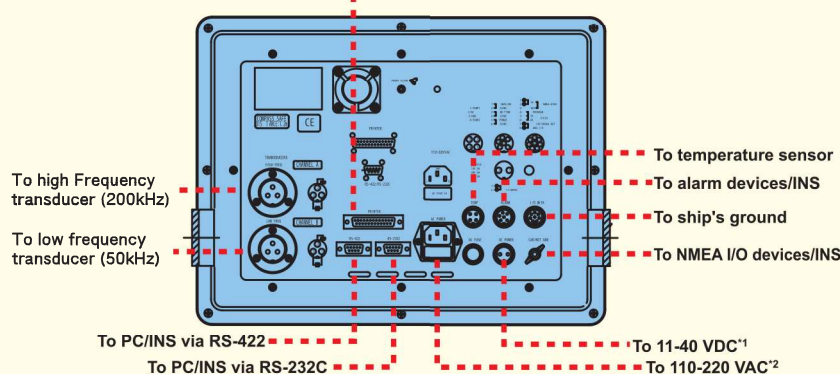
NOTE: Specifications are subject to change without notice or obligation.

Dimensions (mm)



System Configuration

To printer via Centronics port



*1: If system is powered by AC source, this connection is not required.

*2: If system is powered by DC source, this connection is not required.

Standard Equipment

(1 pc. each, except as specified):

- F-3000W Navigation Sounder
- Dual Freq. Transducer (50/200kHz) with 15m cable
- DC Power Supply Cable (3.5m, with 1X2-pin plug)
- Mounting Hardware (bracket) with 2 pcs. knobs
- Plug Adapter (with 2 X 3-pin plug, 1 X 4-pin plug, 1 X 7-pin plug)
- Fuses (2 pcs. each)
 - DC: 5A/125V, 3A/125V, 2A/125V; size: 6.4X30mm
 - AC: 3A/250V; size: 5X20mm
- Plugs:
 - 6-pin plug for ALARM receptacle
 - 8-pin plug for I/O DATA receptacle
- User's Manual