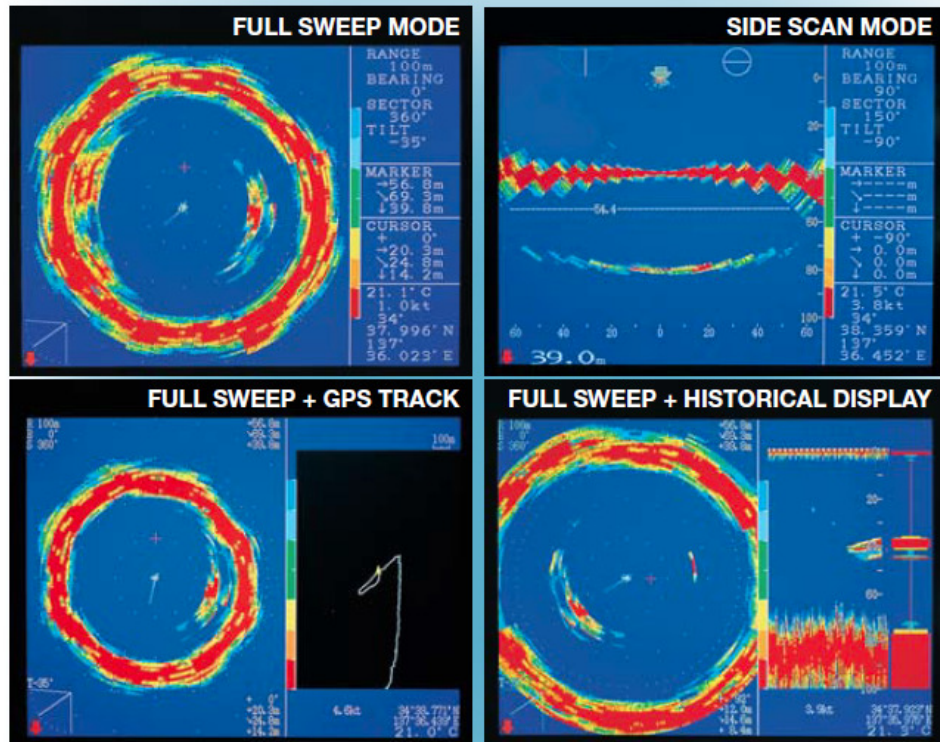


Sonar

Model CSS-3000



Featuring:

Sector scan sonar system consisting of hull and control units with VGA output

MM-15 marine monitor is optionally available. Low-cost PC display may also be used.

Color palette function offers 4096 colors to choose from for displaying echoes.

Full sweep, sector sweep, off-centered sweep, side scan and echo sounder modes

Built-in transducer stabilizer compensating for rolls and pitches

NMEA-0183 interface for GPS sensor for displaying track alongside sonar screen

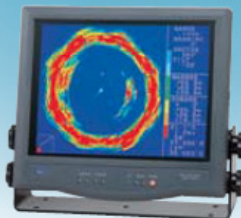
Specifications

- Frequency: 80 kHz (CSS-3000-80), 160 kHz (CSS-3000-160)
- Transmit Power (RMS): 1.2 kW (80 kHz), 1 kW (160 kHz)
- Signal Output Format: VGA (640 × 480 pixels)
- Seachest Diameter: 8"/190 mm
- Hoist Pipe Length (standard): 1350 mm
- Soundome Travel: 200-400 mm
- Range: 40-2000m, 20-1600 fthm, 120-6000 ft
- Training Rate/360°: 3 sec./40m range - 6 sec./320m range
- Scan Sector Steps: 45° (sonar mode), 6° and 12° (side scan mode)
- Power Requirements: 20-30 VDC, 110W (hull unit), 11-40 VDC, 9W (control unit)
- Weight: 60.1 kg (hull unit), 3.2 kg (control unit)
- Size: 296W × 100H × 200D mm (control unit)



HULL UNIT
CSL-3000-160

15" TFT LCD DISPLAY
(Optional)



CONTROL UNIT

Sonar